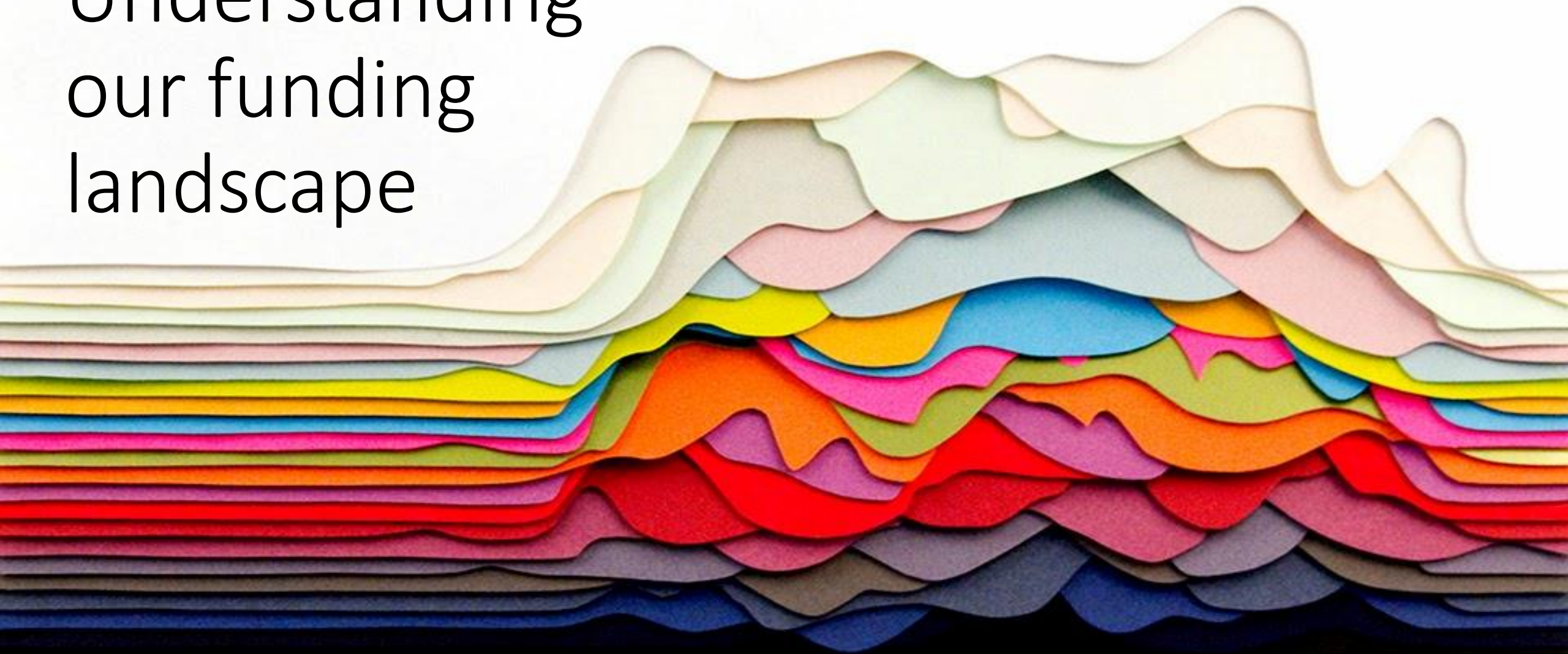
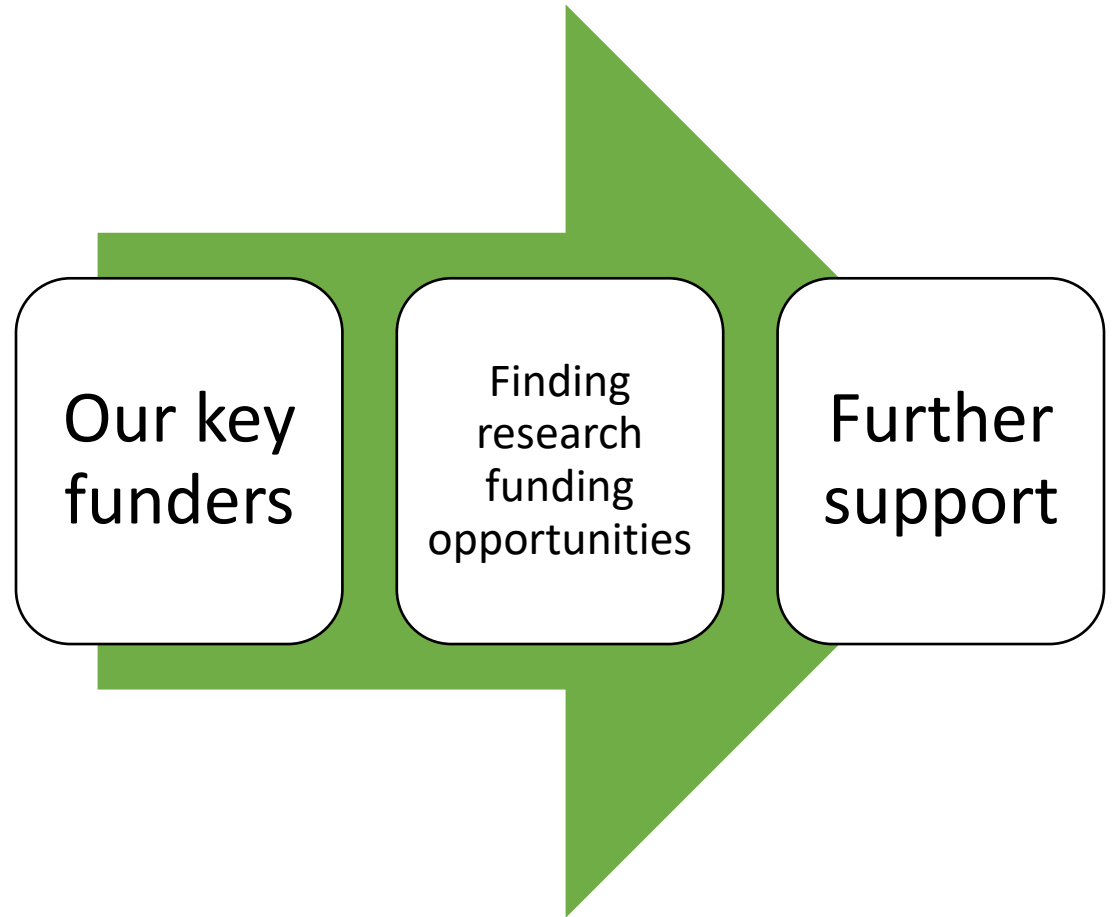


Social Sciences research: Understanding our funding landscape




In this short overview, we'll look at the key funders for social sciences at Glasgow and some of the ways you can find research funding opportunities before connecting you with further support.



Our key funders




UK Research
and
Innovation
(UKRI)



Government
– Local,
Scottish, UK



Individuals,
Charitable
Trusts and
Foundations



Learned
societies



Funding
networks



European
Union (EU)

UK Research and Innovation (UKRI)

Launched in 2018, [UKRI](#) is a non-departmental government body tasked with supporting and developing research and innovation in the UK.

UKRI operates through seven disciplinary research councils, Research England, and Innovate UK.

Although we have secured funding from most or all of the Research Councils, the remits of the [AHRC](#), [ESRC](#) and [NERC](#) are particularly aligned with the College of Social Sciences.

Arts and
Humanities
Research Council
(AHRC)

Biotechnology and
Biological Sciences
Research Council
(BBSRC)

Economic and
Social Research
Council (ESRC)

Engineering and
Physical Sciences
Research Council
(EPSRC)

Innovate UK

Medical Research
Council (MRC)

Natural
Environment
Research Council
(NERC)

Research England

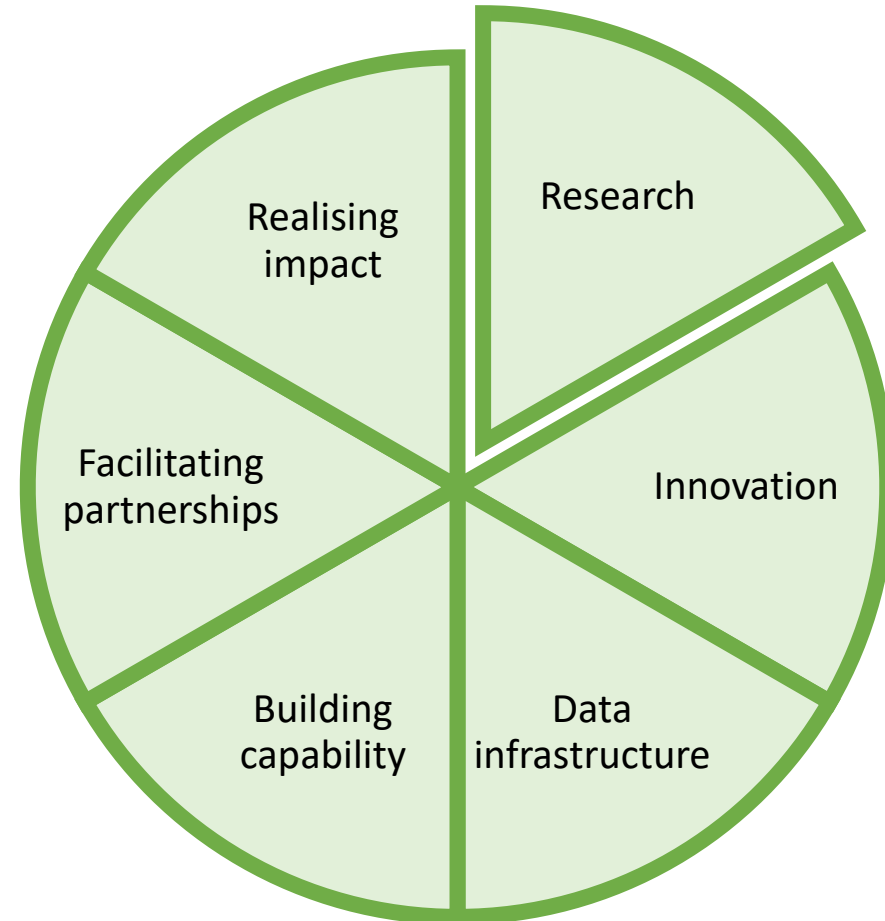
Science and
Technology
Facilities Research
Council (STFC)

UK Research and Innovation (UKRI)

Funding that the UKRI research councils award is intended to support projects and initiatives that deliver on one or more of the strategic goals represented opposite.

It is important to be mindful of these strategic goals when proposing a piece of research work to a research council.

Securing funding is not only about convincing a reviewing panel of the importance of funding your proposal but also of conveying how your proposal aligns with funder priorities.



Government – Local, Scottish, UK

Local

- As part of a [civic university](#), it is very important that the College works closely with local government for the benefit of the city and people around us. To that end we are engaged in a wide range of projects and initiatives using research to address economic and social issues in Glasgow and elsewhere

Scottish

- The Scottish Government (via the [Scottish Funding Council](#) - SFC) is the largest single source of university research funding in Scotland. This money is channelled through the SFC's block grant, 11 themed Research Pools, and eight Innovation Centres
- The College's researchers also engage in Scottish Government policy making

UK

- In addition to funding awarded via the UKRI's research councils, our academics also engage directly on other projects and policy initiatives

Individuals, Charitable Trusts and Foundations

Certain individuals with a connection to the University (normally alumni) may choose to support research with regular donations or a larger, one-off gift. The purpose of these sums is usually specified by the donor or by the University if part of a fundraising effort.

There are a number of Charitable Trusts and Foundations that were started by very large investments from individuals that are now significant awarders of research money. Four of the most important are listed, each of which has its core areas of focus. For example, Henry Wellcome was a pharmaceutical magnate who created the Wellcome Trust to fund research into improving human and animal health.

Individuals

Alumni

Other

Charitable Trusts and Foundations

[Nuffield Foundation](#)

[Wellcome Trust](#)

[Joseph Rowntree Foundation](#)

[Leverhulme Trust](#)

Learned societies

The [Royal Society of Edinburgh](#) and [British Academy](#) are national academies with charity status that fund research projects and research initiatives.

Unlike the Research Councils and Charitable Trusts and Foundations which normally look for what difference a project will make to society, the learned societies are interested purely in the development of academic thought and of academic capacity in terms of the individual, collaborations and networks.



**British
Academy**

**Royal
Society of
Edinburgh**

Funding networks

Connecting UK research councils with partner organisations, funding networks like [NORFACE](#) and the [Trans-Atlantic Platform](#) (T-AP) aim to link researchers across particular countries to address shared challenges.

Depending upon the question(s) being asked by the funding call, the range of countries involved may vary as might the amount of money being invested by each.



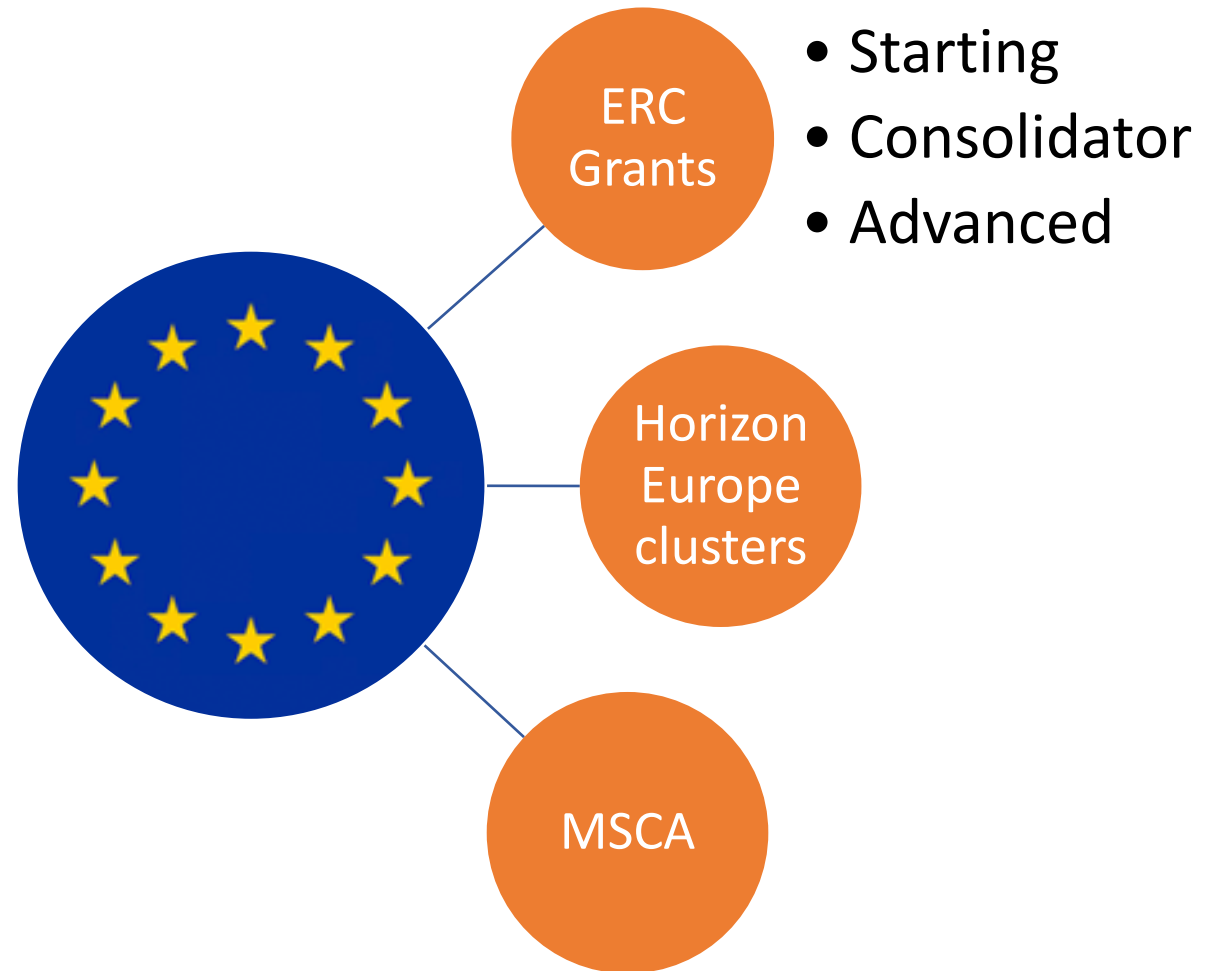
European Union (EU)

The UK continues to access research funding from the European Union via the [European Research Council](#) (ERC), [Horizon Europe](#) and [Marie Skłodowska-Curie Actions](#) (MSCA).

With a similar goal to the learned societies' drive for pure academic achievement, the ERC Grants provide a significant sum to individuals at three post-PhD career stages.

Horizon Europe clusters require large consortiums to collaborate to address identified challenges facing European society.

MSCA initiatives provide money for staff exchanges, Doc/Post-Doc programmes and other academic engagement activity



Finding research funding opportunities

There are lots of ways to access available research funding. For example:

- Sign up for funder mailing lists
- Contact the [Research Office](#) for advice
- Visit funder websites or social media
- Use your university login to access funding search engine [Research Professional](#)
- Network internally and externally



Network internally

Collaboration with colleagues is an increasingly vital part of research careers as the funding landscape moves further towards larger, challenge-led opportunities that require big, multi- or inter- disciplinary teams.

The [University](#) is home to nearly 5,000 academic staff across four [colleges](#) and a wide variety of schools and research units. You are encouraged to take available opportunities to engage with colleagues across disciplines wherever possible.

Social Sciences

- Social & Political Sciences
- Interdisciplinary Studies
- Adam Smith Business School
- Law
- Education

Arts

- Critical Studies
- Culture & Creative Arts
- Humanities
- Modern Languages & Cultures

Medical, Veterinary & Life Sciences

- Medicine, Dentistry & Nursing
- Veterinary Medicine
- Life Sciences

Science & Engineering

- Chemistry
- Computing Science
- Engineering
- Geographical & Earth Sciences
- Mathematics & Statistics
- Physics & Astronomy
- Psychology
- SUERC

Network externally

Many research opportunities will also require working across institutions and countries. Again, fostering relationships will only help allow you to connect up with national and international funding and further your work.

Of note here in the UK context is the [Russell Group](#) of universities (listed on the right). This is an association of 24 research-intensive, leading universities of which Glasgow is one. Our ranking position in the Russell Group as determined via HESA data is an important measure of our research activity.



University of Birmingham
University of Bristol
University of Cambridge
Cardiff University
Durham University
University of Edinburgh
University of Exeter
University of Glasgow
Imperial College London
King's College London
University of Leeds
University of Liverpool
London School of Economics
and Political Science
University of Manchester
Newcastle University
University of Nottingham
University of Oxford
Queen Mary University of London
Queen's University Belfast
University of Sheffield
University of Southampton
University College London
University of Warwick
University of York

Further support

We hope that you found this social sciences funding landscape overview helpful.

For more information on any of the items covered, you can visit the links in each section.

If you are thinking about applying to a particular fund or if you have general query, please use one of the buttons opposite.

I want to apply
for research
funding

I have a
general query